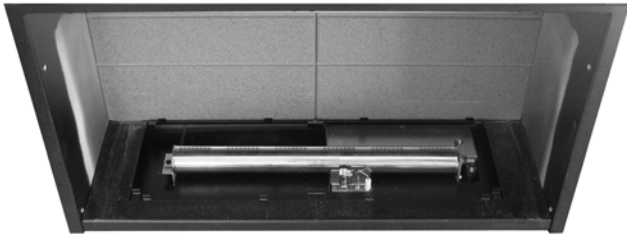
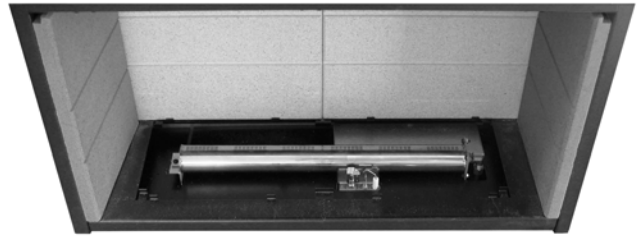




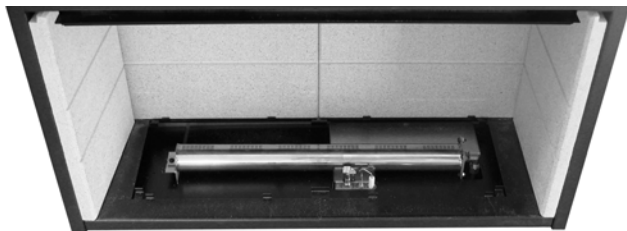
CAUTION: The logs are extremely fragile and must be handled accordingly. Gloves should be worn and any inhalation of dust should be avoided. The logs must be kept away from children at all times. Never put additional logs on the fire. Never use logs other than those originally supplied, or genuine Legend Spare Parts.



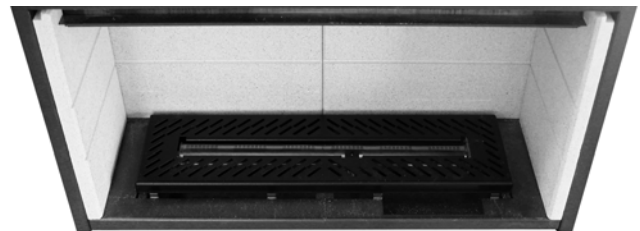
1. Place the rear ceramic panels into position.



2. Place the side ceramic panels into position. Note alignment of grooves.



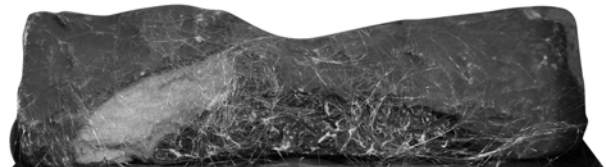
3. Carefully slide the top tray into the firebox along the top edges of the side ceramic panels.



4. Insert the burner grille into position, ensuring the pilot tab is towards the front of the fire.



5. Place the six ceramic bricks into position, four on the bottom and two in the top tray.



Neon Embers placed against rear log

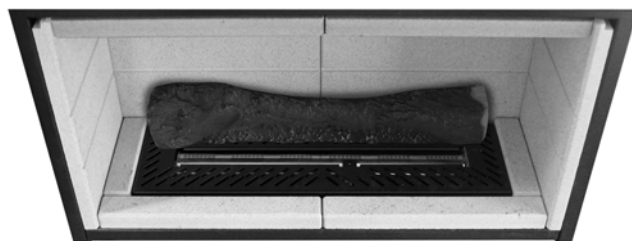
Using the Neon Embers is a requirement on this Ethos fire ceramic layout. This product may need to be renewed on annual service (dependant on usage) and is available as a spare direct from Legend Fires.

1. Remove all the fibres from the pack but use only half its contents for the short 260mm burner and half to two thirds for the longer 420mm burner.

2. Tease the fibres out until they are almost the length of the rear log, then form a slight arch to help keep the electrically conductive fibres away from the ignition electrode.

3. Place the Neon Embers back up against the rear log then proceed with the step by step log layout, careful adjustments can be made by repositioning the embers

until a desirable flame picture is achieved.



6. Place the large log at the rear of the burner cover plate. ENSURE THAT IT DOES NOT COVER THE BURNER.



7. Arrange the slate ceramics onto the burner cover plate. ENSURE THAT THEY DO NOT COVER THE BURNER.

NEVER PLACE ANY NEON EMBERS ANYWHERE NEAR THE PILOT OR THE IGNITION ELECTRODE, THIS WILL CAUSE A SHORT AND IMMEDIATELY SHUT DOWN THE FIRE OR COULD POSSIBLY CAUSE EXPLOSIVE IGNITION DELAY ON START UP.



9. Place the remaining logs as shown in the photographs below.



8.



9.



10.



11.



12.



13.

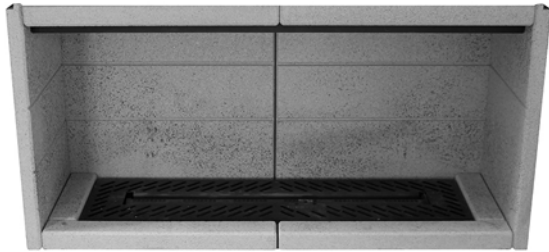


14.

It is very important that all the logs are used and arranged as shown in order to achieve the desired flame picture. It may be necessary to remove some or all of the logs to clean them at some time. Cleaning must only be done using a soft brush.



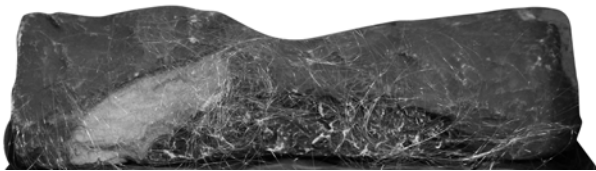
CAUTION: The logs are extremely fragile and must be handled accordingly. Gloves should be worn and any inhalation of dust should be avoided. The logs must be kept away from children at all times. Never put additional logs on the fire. Never use logs other than those originally supplied, or genuine Legend Spare Parts.



1. Insert the burner grille into position, ensuring the pilot tab is towards the front of the fire.



2. Place the large log at the rear of the burner cover plate. ENSURE THAT IT DOES NOT COVER THE BURNER.



Neon Embers placed against rear log

Using the Neon Embers is a requirement on this Ethos fire ceramic layout. This product may need to be renewed on annual service (dependant on usage) and is available as a spare direct from Legend Fires.

1. Remove all the fibres from the pack but use only half its contents for the short 260mm burner and half to two thirds for the longer 420mm burner.

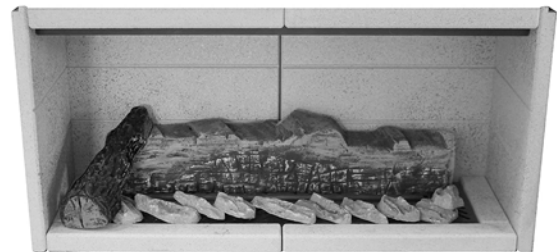
2. Tease the fibres out until they are almost the length of the rear log, then form a slight arch to help keep the electrically conductive fibres away from the ignition electrode.

3. Place the Neon Embers back up against the rear log then proceed with the step by step log layout, careful adjustments can be made by repositioning the embers until a desirable flame picture is achieved.

NEVER PLACE ANY NEON EMBERS ANYWHERE NEAR THE PILOT OR THE IGNITION ELECTRODE, THIS WILL CAUSE A SHORT AND IMMEDIATELY SHUT DOWN THE FIRE OR COULD POSSIBLY CAUSE EXPLOSIVE IGNITION DELAY ON START UP.



3. Arrange the small bark pieces onto the burner cover plate ensuring there are air gaps between them to facilitate air supply to the burner. ENSURE THAT THEY DO NOT COVER THE BURNER.



4. Place the remaining logs as shown in the following photographs.



5.



6.



7.



8.



9.



10.



11.



CAUTION: The logs are extremely fragile and must be handled accordingly. Gloves should be worn and any inhalation of dust should be avoided. The logs must be kept away from children at all times. Never put additional logs on the fire. Never use logs other than those originally supplied, or genuine Legend Spare Parts.



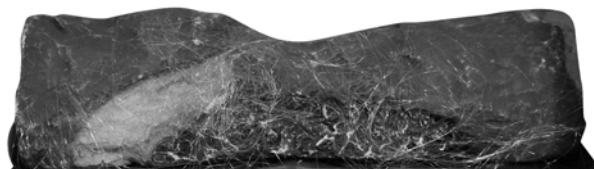
1. Insert the burner grille into position, ensuring the pilot tab is towards the front of the fire.



2. Place the three ceramic bricks into position.



3. Place the large log at the rear of the burner cover plate. ENSURE THAT IT DOES NOT COVER THE BURNER.



Neon Embers placed against rear log

Using the Neon Embers is a requirement on this Ethos fire ceramic layout. This product may need to be renewed on annual service (dependant on usage) and is available as a spare direct from Legend Fires.

1. Remove all the fibres from the pack but use only half its contents for the short 260mm burner and half to two thirds for the longer 420mm burner.
2. Tease the fibres out until they are almost the length of the rear log, then form a slight arch to help keep the electrically conductive fibres away from the ignition electrode.
3. Place the Neon Embers back up against the rear log then proceed with the step by step log layout, careful adjustments can be made by repositioning the embers until a desirable flame picture is achieved.

NEVER PLACE ANY NEON EMBERS ANYWHERE NEAR THE PILOT OR THE IGNITION ELECTRODE, THIS WILL CAUSE A SHORT AND IMMEDIATELY SHUT DOWN THE FIRE OR COULD POSSIBLY CAUSE EXPLOSIVE IGNITION DELAY ON START UP.



4. Arrange the slate ceramics onto the burner cover plate. ENSURE THAT THEY DO NOT COVER THE BURNER.



5. Place the remaining logs as shown in the photographs below.



It is very important that all the logs are used and arranged as shown in order to achieve the desired flame picture. It may be necessary to remove some or all of the logs to clean them at some time. Cleaning must only be done using a soft brush.



CAUTION: The logs are extremely fragile and must be handled accordingly. Gloves should be worn and any inhalation of dust should be avoided. The logs must be kept away from children at all times. Never put additional logs on the fire. Never use logs other than those originally supplied, or genuine Legend Spare Parts.



1. Insert the burner grille into position, ensuring the pilot tab is towards the front of the fire.



2. Place the ceramic brick into position.



3. Arrange the slate ceramics onto the burner cover plate. ENSURE THAT THEY DO NOT COVER THE BURNER.



Neon Embers placed against rear log

Using the Neon Embers is a requirement on this Ethos fire ceramic layout. This product may need to be renewed on annual service (dependant on usage) and is available as a spare direct from Legend Fires.

1. Remove all the fibres from the pack but use only half its contents for the short 260mm burner and half to two thirds for the longer 420mm burner.
2. Tease the fibres out until they are almost the length of the rear log, then form a slight arch to help keep the electrically conductive fibres away from the ignition electrode.
3. Place the Neon Embers back up against the rear log then proceed with the step by step log layout, careful adjustments can be made by repositioning the embers until a desirable flame picture is achieved.

NEVER PLACE ANY NEON EMBERS ANYWHERE NEAR THE PILOT OR THE IGNITION ELECTRODE, THIS WILL CAUSE A SHORT AND IMMEDIATELY SHUT DOWN THE FIRE OR COULD POSSIBLY CAUSE EXPLOSIVE IGNITION DELAY ON START UP.



4. Place the large log at the rear of the burner cover plate. ENSURE THAT IT DOES NOT COVER THE BURNER.



5. Place the remaining logs as shown in the photographs below.



It is very important that all the logs are used and arranged as shown in order to achieve the desired flame picture. It may be necessary to remove some or all of the logs to clean them at some time. Cleaning must only be done using a soft brush.